

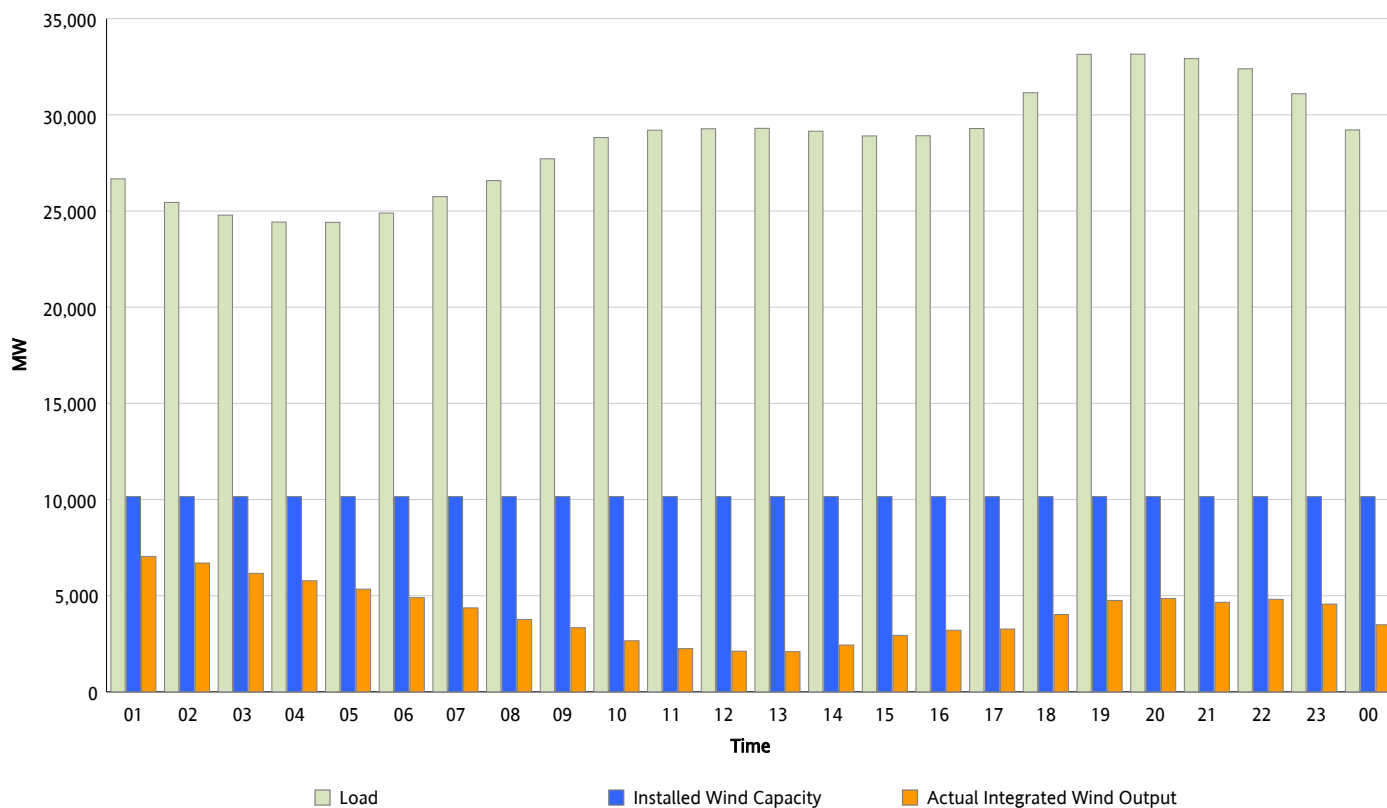


## ERCOT Grid Operations

### Wind Integration Report : 12/23/2012

Peak Load	33,158 MW
Load Peak Hour (HE)	20
Wind Over Peak	4,851 MW
Wind Record 11/10/12	8,521 MW
Max Wind Value*	7,326 MW
Wind Peak Time	00:00
Wind Integration %	26.74 %

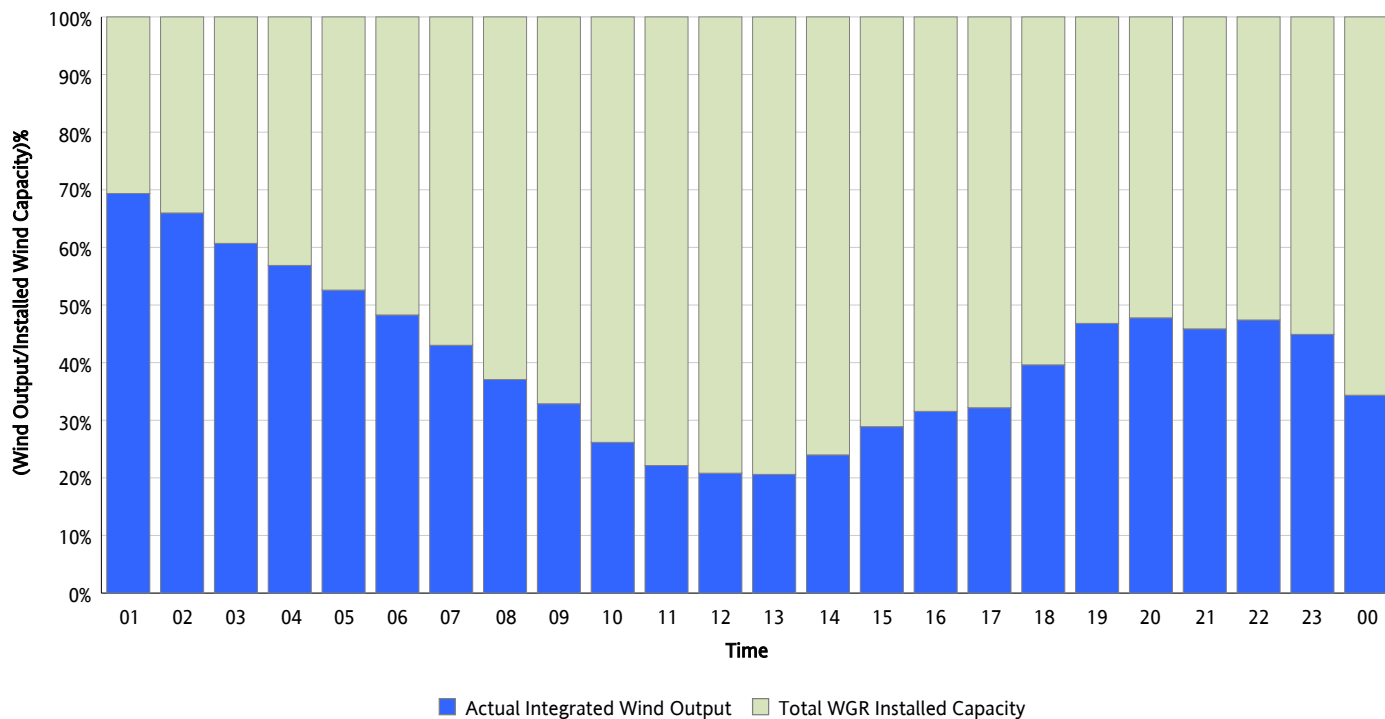
**Hourly Average Actual Load vs. Actual Wind Output**  
**12/23/2012**



*\* Wind Record and Wind Max represent instantaneous values and the rest of the values are integrated over the hour*

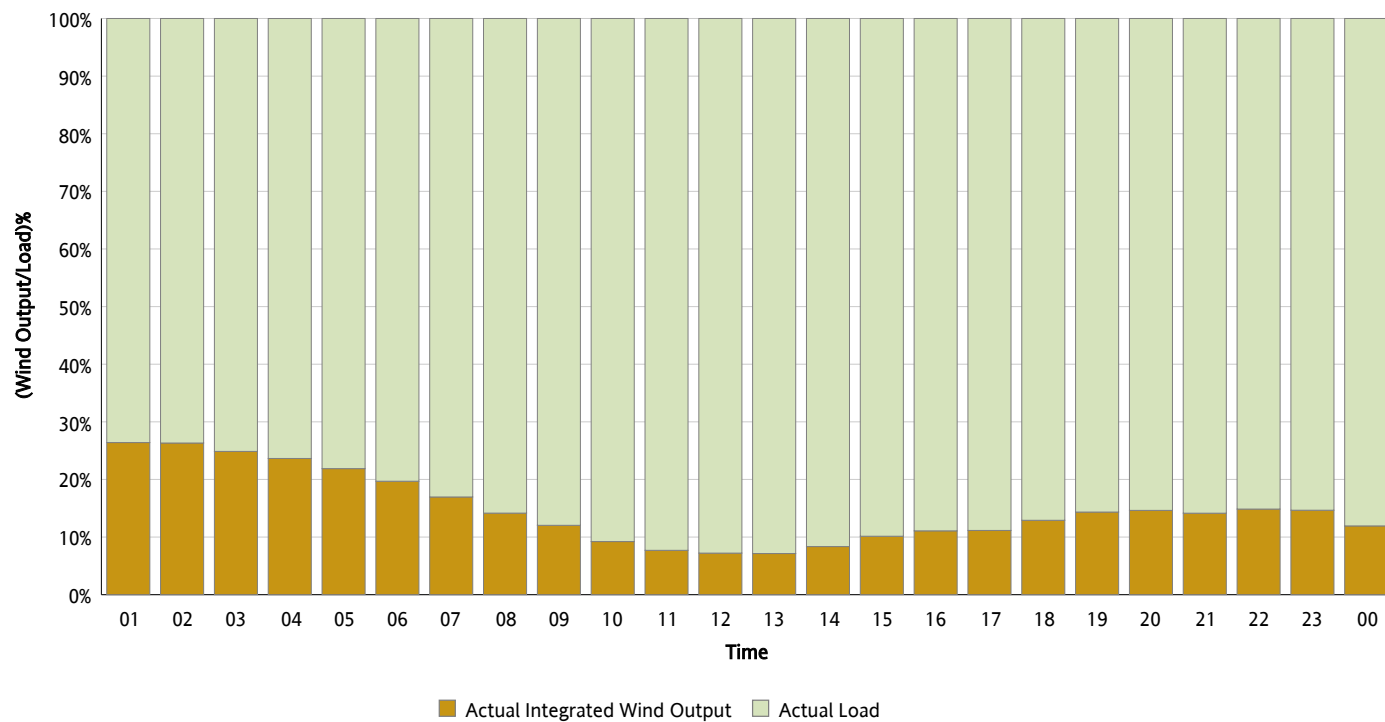
## Actual Wind Output as a Percentage of the Total Installed Wind Capacity

12/23/2012



## Actual Wind Output as a Percentage of the ERCOT Load

12/23/2012



## ERCOT Load vs. Actual Wind Output

12/16/2012 - 12/23/2012

